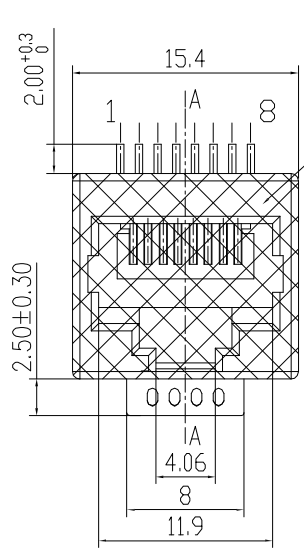
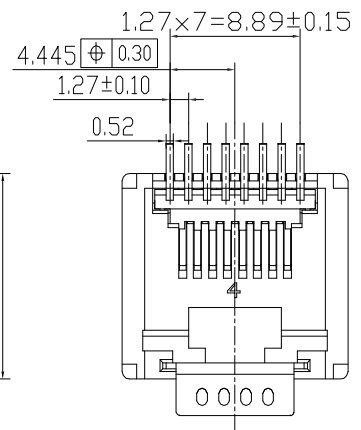
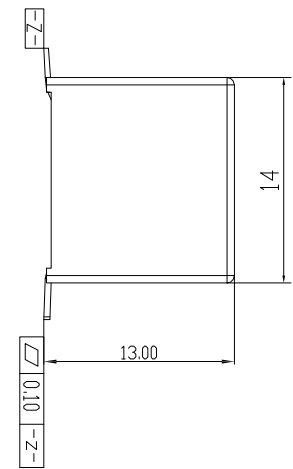


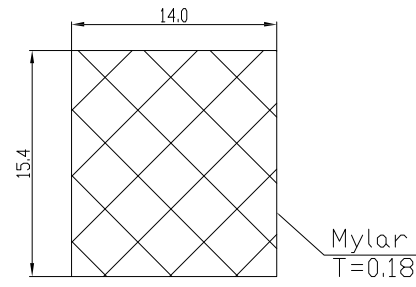
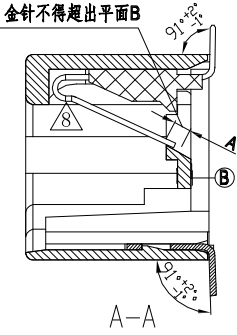
REV. 版本	ECN NO. 变更说明	DATE 日期
01	NEW VERSION	2020/10/10



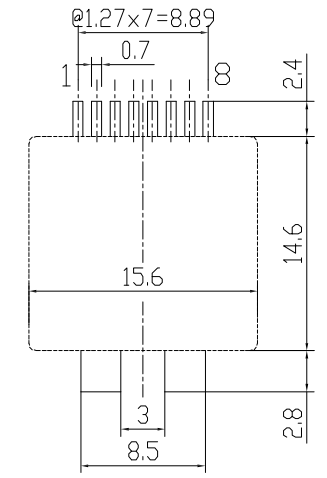
KAPTON (高温胶)



组装成品后: 尺寸A不得小于0.5mm  
插入水晶头后: 金针不得超出平面B



高温胶(Mylar)



PC BOARD LAYOUT T=1.60mm  
COMPONENT SIDE SHOWN  
Tolerances±0.05mm

NOTES:

ELECTRICAL:

- 1. VOLTAGE RATING : 125 VAC RMS.
- 2. CURRENT RATING : 1.5 AMP.
- 3. CONTACT RESISTANCE : 20 MILLIOHMS MAX.
- 4. INSULATION RESISTANCE : 1000 MEGOHMS MIN @ 500 VDC
- 5. DIELECTRIC STRENGTH : 1500 V DC OR 1000V AC RMS @ 0.5mA 50 Hz / 60 Hz 1 Minute

MECHANICAL:

- 1. HOUSING&INSERT& MATERIAL : LCP UL94V-0. COLOR BLACK
- 2. CONTACT MATERIAL : PHOSPHOR BRONZE T=0.35mm.
- 3. PLATING : 1: CONTACT AREA- SELECTIVE GOLD PLATING G/F.  
2: TAILS PLATING TIN OVER NICKEL.
- 4. OPERATING LIFE : 750 CYCLES MIN.
- 5. MATING/UNMATING FORCE: : 30N Max.
- 6. RETENTION STRENGTH: : 50N FOR 60S±5S.

ENVIRONMENTAL:

- 1. STORAGE : -40°C TO +85°C RELATIVE HUMIDITY<80%.
- 2. OPERATION : -40°C TO +85°C.

MATES WITH MODULAR PLUG CONFORMING TO FCC PART 68, SUBPART F.

Coorle Technolgy

TOLERANCES  
公差

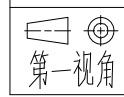
00-15	±0.15
15-30	±0.20
30-	±0.25

ANGLES: ±1°

Material: 材质	SEE NOTE
Finish: 电镀	SEE NOTE
SHEET 1 OF 2 第 1 页 共 2 页	

Designed: 设计	
Checked: 审核	
Approved: 核准	

NAME: 名称	RJ45 TOP ENTRY SMT PCB JACK PIN 2.0
DWG NO: 图号	
PART NO: 料号	N/A
REV. 版本	09



A4  
SIZE

SCALE  
比例  
1:1

UNIT  
单位  
mm

CUSTOMER:  
客户  
MODEL NO:  
料号  
N/A