



**SPECIFICATION FOR APPROVAL**

**CUSTOMER** \_\_\_\_\_

**CUSTOMER'S PART NO.** \_\_\_\_\_ **REV.** \_\_\_\_\_

**DESCRIPTION**     **RJ45+2USB2.0 (10/100 Base-T 1 Port)**    

**PART NO.**     **JBF111050022**     **REV.**     **A**    

**OLD P/N** \_\_\_\_\_

**ISSUE NO.**     **15B-226**    

**ISSUE DATE**     **JUL.27,2015**    

<input type="checkbox"/> <b>APPROVED</b>	<input type="checkbox"/> <b>REJECTED:</b>
<input type="checkbox"/> <b>APPROVED UNDER THE CONDITIONS:</b>	



## SPECIFICATION FOR APPROVAL

Customer Part No.:

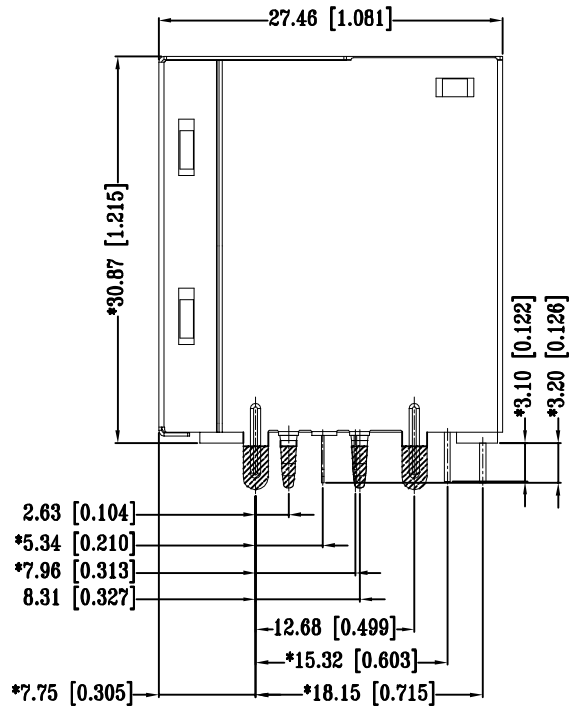
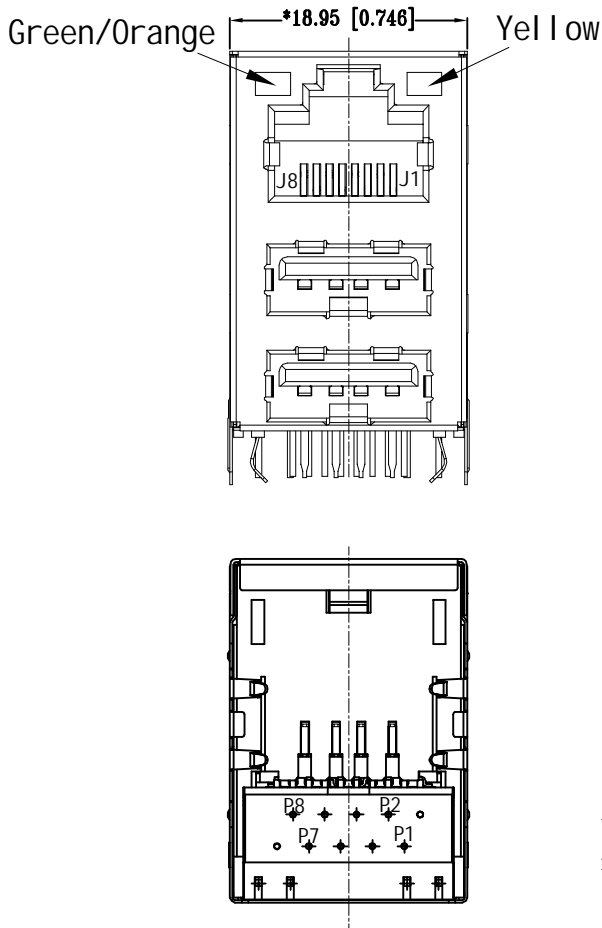
Rev.: A

Part Name: RJ45+2USB2.0 (10/100 Base-T 1 Port)



### 4. Mechanical Dimension and Notes:

#### 4-1. Mechanical Dimension:



Unless otherwise specified, all dimensions tolerances is  $\pm 0.254 / 0.010$ .

#### 4-2. Notes:

- CONNECTOR MATERIAL:  
HOUSING: THERMOPLASTIC UL94 V-0  
SHIELD: Brass  
SHIELD PLATING: NICKEL  
CONTACT: COOPER ALLOY  
CONTACT PLATING: SELECTIVE GOLD, 15 MICRO-INCHS MIN IN CONTACT AREA
- PIN NOT ELECTRICALLY CONNECTED MAYBE OMITTED SEE ELECTRICAL DRAWING FOR OMITTED PINS
- RJ45 CAVITIES CONFORM TO FCC RULES AND REGULATION PART 68.
- THE PART IS RECOMMENDED FOR WAVE SOLDERING PROCESS PEAK SOLDERING TEMPERATURE IS 260° C MAX, 10 SECS MAX
- OPERATING TEMPERATURE T=0° C TO +70° C.
- STORAGE TEMPERATURE T=-40° C TO +85° C.
- ALL CRITICAL DIMENSIONS WITH ""\*

LED SPECIFICATION			
STANDARD LED	WAVELENGTH	Forward V(max)	TYP
GREEN/ORANGE	565nm	2.4V	2.2V
YELLOW	590nm	2.5V	2.1V

\*WITH A FORWARD CURRENT OF 20mA

Drawn by

Designed by

Approved by

## SPECIFICATION FOR APPROVAL

Customer Part No.:

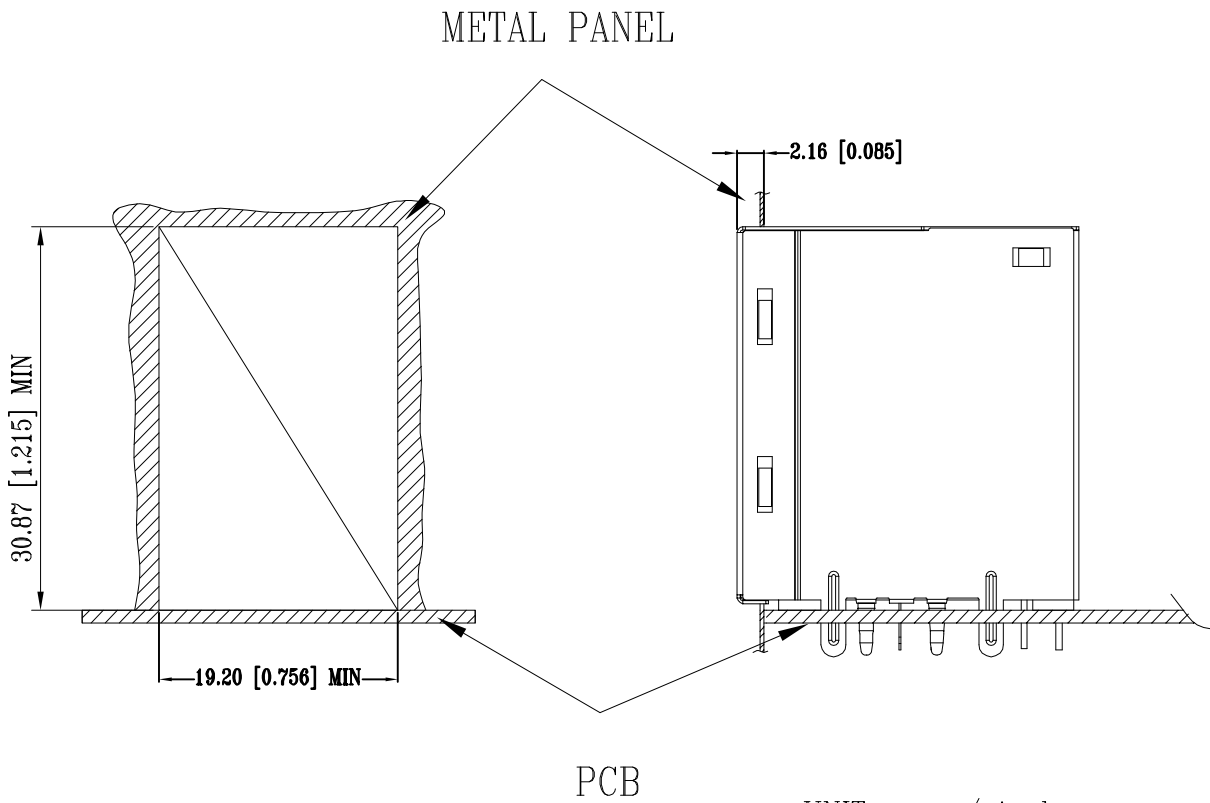
Rev.: A

Part Name: RJ45+2USB2.0 (10/100 Base-T 1 Port)



5. Label and Recommended PWB Layout and Suggested Panel Opening:

5-1. Suggested Panel Opening:




UNIT: mm / inch

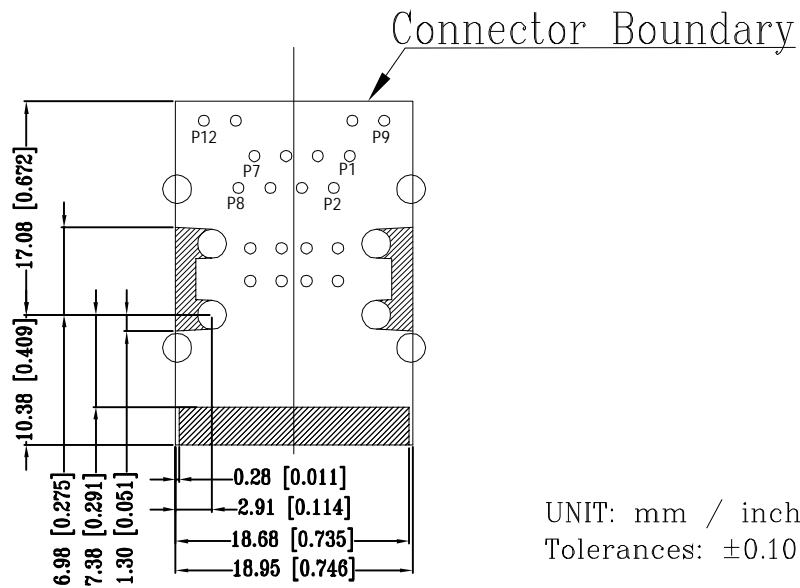
Tolerances:  $\pm 0.10$  / 0.004

REFERENCE ONLY

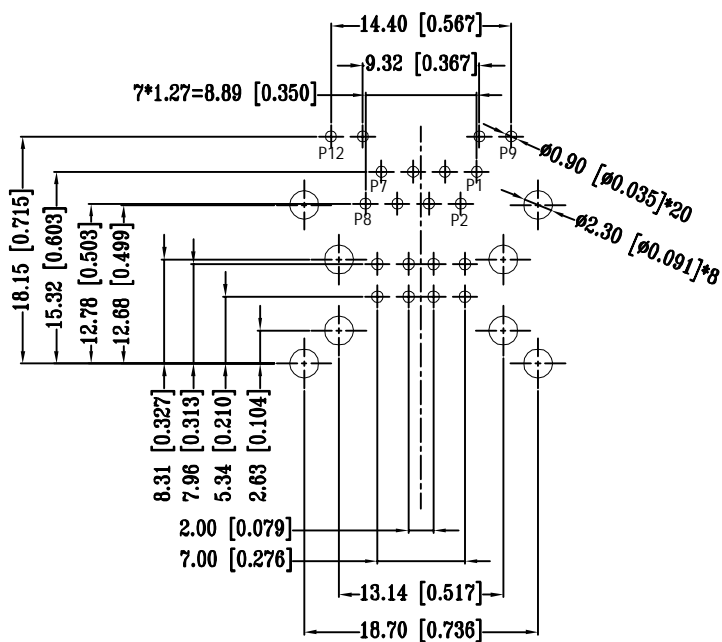
## SPECIFICATION FOR APPROVAL

Customer Part No.:	Rev.: A
Part Name: RJ45+2USB2.0 (10/100 Base-T 1 Port)	

5-2. Recommended PWB Layout (Component Side View):



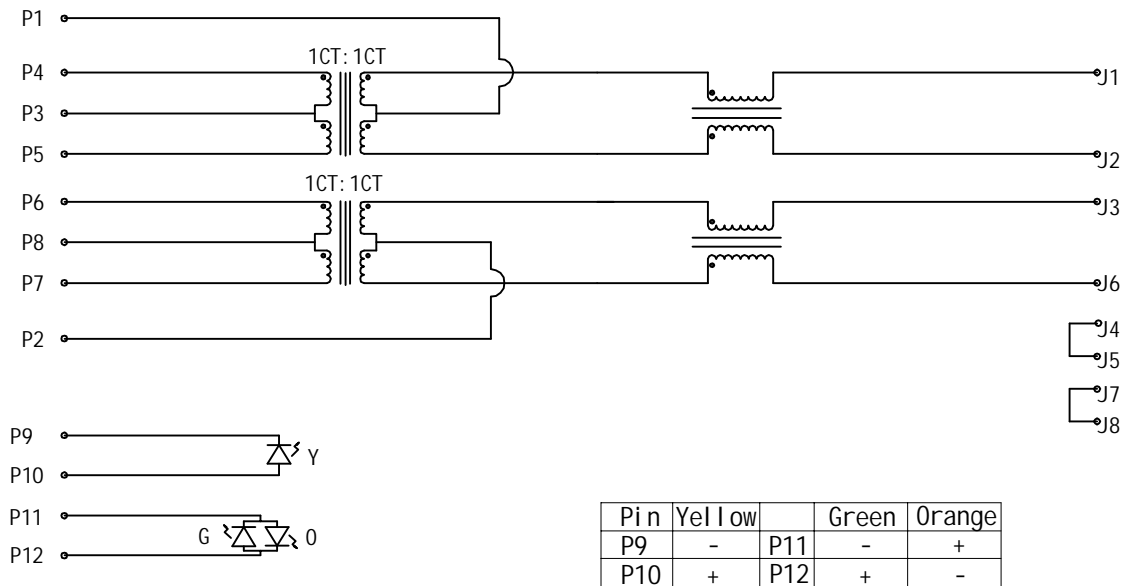
5-3. Recommended PWB Layout (Component Side View):



## SPECIFICATION FOR APPROVAL

Customer Part No.:	Rev.: A
Part Name: RJ45+2USB2.0 (10/100 Base-T 1 Port)	

6. Circuit Schematic and Electrical Specifications:  
6-1. Circuit Schematic:



6-2. Electrical Specifications:

- 1.0 Turn Ratio @100KHz: (P4~P5):(J1~J2) = 1:1±5%  
(P6~P7):(J3~J6) = 1:1±5%
- 2.0 Primary Inductance: 350uH MIN @100KHZ,0.1V 8mA DC BIAS
- 3.0 DC Resistance:(J1~J2):(J3~J6) 1.2 OHMS MAX
- 4.0 Insertion Loss: 1-100MHz -1.2dB MAX
- 5.0 Return Loss: 1-30MHz -16dB MIN  
30-60MHz -12dB MIN  
60-80MHz -10dB MIN
- 6.0 CROSS TALK: 1-100MHz -30dB MIN
- 7.0 COMMON TO COMMON MODE ATTENUATION: 1-100MHz -30dB MIN
- 8.0 Isolation: PHY Side to Line Side: 1500VAC OR 2250VDC